

DIRECT EXTRACTIVE FILTER PROBES

General Purpose Model 36C

BALDWIN™ - Series

Application

The Baldwin™-Series Model 36C Heated Filter Probe is designed to be mounted on a stack or duct for use in high particulate applications. Its primary function is to provide a heated environment to maintain sample gas temperatures above dewpoint and remove particulate material from the gas sample. Model 36C features a standard 10 micron sintered stainless steel filter element, a circuit board regulated heater jacket, an integral calibration gas port on both sides of the filter element, a NEMA 4 enclosure, and a circuit board controlled isolation calibration blowback system to clean the filter element.



General Specifications

| | |
|----------------------------|--|
| Probe | |
| Calibration | Integral calibration on both sides of filter element |
| Heater Jacket Temp Control | Circuit board regulated |
| Connections | 1¼" male pipe nipple mount; ½" male pipe thread adapter |
| Tube Connectors | 3/8" sample line, 1/4" calibration gas, 3/8" blowback |
| Thermocouple | Type K |
| Blowback | Isolation calibration; 4-way isolated blowback / calibration valve |
| Blowback Tank | 16 ga. SS, 4" x 8", leak checked, pressure tested |
| Heat-shrink Boot | 7" length, 2.75" min expanded I.D. nose |
| O-rings | Viton® |
| Gaskets | Graphoil® |
| Dimensions | 14 x 15 x 8 in. HWD (w/o Stinger probe) 36 x 38 x 20 cm HWD) |
| Weight | 37 lbs 14 kg |

Operating Specifications

| | |
|-----------------------------|--|
| Calibration Gas Requirement | 20 psig, 6-10 LPM |
| Probe Operating Temperature | 375°F (190°C) |
| Input Voltage | 110 (220 optional) VAC, 50/60 Hz |
| Blowback Duration | 5 sec standard (30 sec maximum) |
| Blowback Frequency | Every 24 hours standard (range 10 minutes to 99 hours) |
| Blowback Valve | 4-way Isolation, 110 standard (220 optional) VAC, 50/60 Hz |
| Blowback Flowrate | 14 scfh |
| Instrument Air for Blowback | Min 50 psig, Max 90 psig |

Material Specifications

| | |
|--------------------------|---|
| Enclosure Material | NEMA 4 Steel (standard); NEMA 4X Stainless Steel (optional) |
| Heater Type | Silicone rubber blanket with metal snap closures (standard) Heater bands, 350W (optional upgrade) |
| Oven Insulation Material | ½" thick silicone, medium density |
| Filter Chamber Material | 316 stainless steel |
| Filter Element Types | 10 micron sintered SS (standard) 5, 20 micron sintered SS 2 micron ceramic 2 micron SS screen mesh |



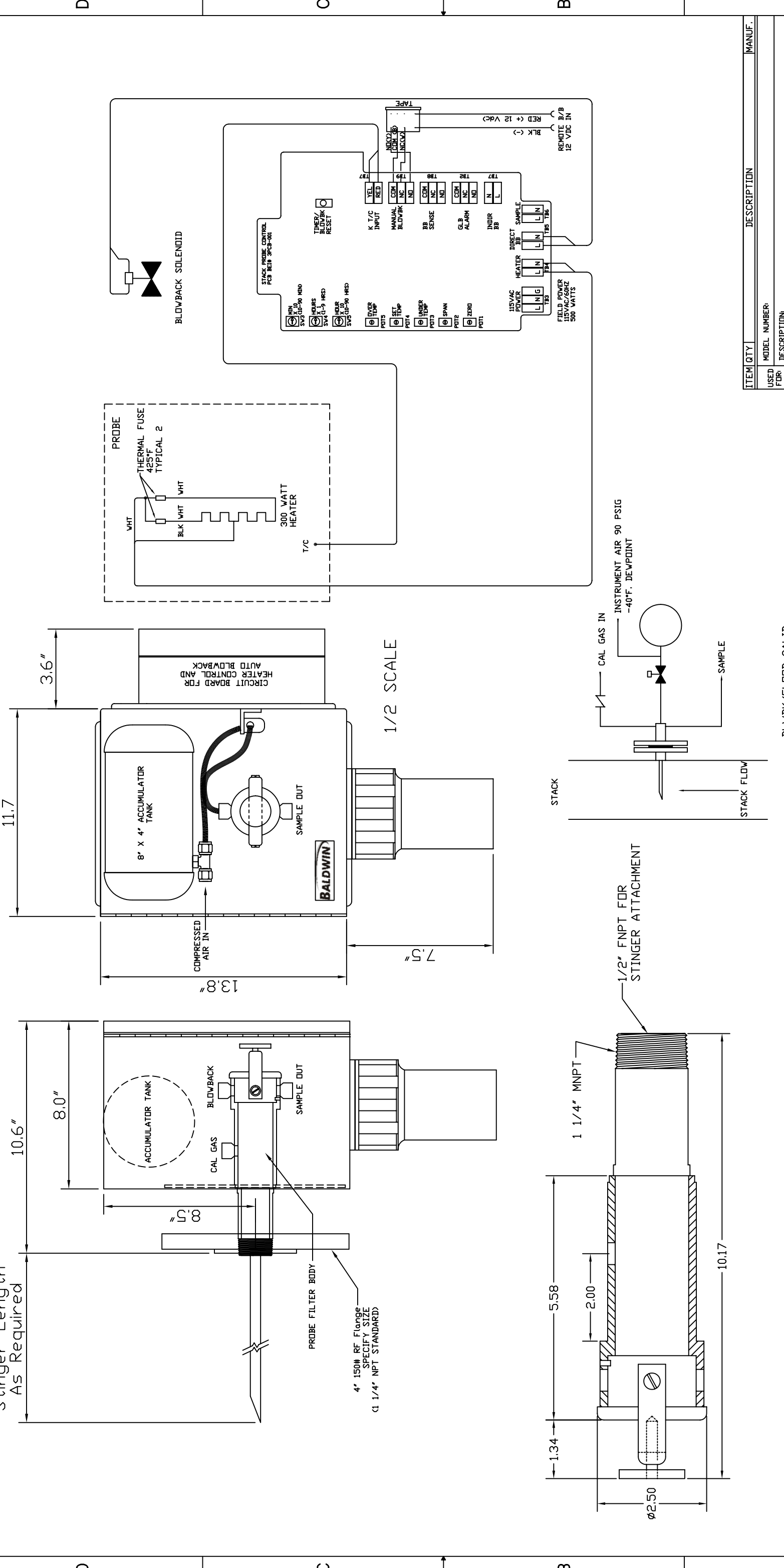
Perma Pure LLC
P.O. Box 2105, 8 Executive Drive
Toms River, NJ 08754
www.permapure.com

Tel: 732-244-0010
Tel: 800-337-3762 (toll free US)
Fax: 732-244-8140
Email: info@permature.com

v4.11

| | | | |
|------|----------|-----------------|----|
| REV# | DATE | DESCRIPTION | 1 |
| 0 | 00/00/00 | INITIAL DRAWING | |
| | | DRAWN | JO |
| | | APPROVED | |

| | | | | | | |
|---|---|---|---|---|---|---|
| 2 | 3 | 4 | 5 | 6 | 7 | 8 |
|---|---|---|---|---|---|---|



| | | | | | |
|-----------------------------|---------------|--|--|------------------|--|
| ITEM QTY | | DESCRIPTION | | MANUF. | |
| USED FOR: | MODEL NUMBER: | | | | |
| FUR: | DESCRIPTION: | | | | |
| DRAWN BY: | DATE: | BALDWIN, INC. | | | |
| JO | 05/12/02 | MODEL 36C HEATED FILTER PROBE ARRANGEMENT DRAWING | | | |
| APP'D: | DATE: | PART DESCRIPTION | | | |
| | | MODEL 36C HEATED FILTER PROBE ARRANGEMENT DRAWING | | | |
| MATERIAL: | | SIZE: | | DRAWING/PART NO. | |
| | | B NTS | | MODEL 36C | |
| FINISH: | | DESIGN DIMENSIONS ARE IN INCHES | | CAD DIR: S:\DRAW | |
| | | EQUIVALENTS WHEN USED | | SHEET 1 OF 1 | |
| | | BALDWIN, INC. | | | |
| UNLESS OTHERWISE SPECIFIED: | | PROPRIETARY INFORMATION | | | |
| TOLERANCE DECIMALS | | THIS DOCUMENT CONTAINS INFORMATION PROPRIETARY TO BALDWIN, INC. | | | |
| 1 PLACE = ± .02 | | AND IS TO BE USED SOLELY FOR THE PURPOSE FOR WHICH IT IS FURNISHED. | | | |
| 2 PLACE = ± .02 | | THIS DOCUMENT SHALL NOT BE REPRODUCED OR TRANSMITTED IN ANY FORM OR BY ANY MEANS, ELECTRONIC OR MECHANICAL, INCLUDING PHOTOCOPYING, RECORDING, OR BY ANY INFORMATION STORAGE AND RETRIEVAL SYSTEM, WITHOUT THE WRITTEN PERMISSION OF BALDWIN, INC. | | | |
| 3 PLACE = ± .010 | | BALDWIN, INC. | | | |
| ANGLES = ± 5° | | www.baldwinUSA.com | | | |
| HOLES = ± .002-.001 | | | | | |
| FINISHES | | | | | |
| 1 PLACE = ± .02 | | | | | |
| 2 PLACE = ± .02 | | | | | |
| 3 PLACE = ± .010 | | | | | |
| ANGLES = ± 5° | | | | | |
| HOLES = ± .002-.001 | | | | | |
| BALDWIN | | | | | |
| www.baldwinUSA.com | | | | | |